

Bispecific Antibodies for Multiple Myeloma: What You Need to Know

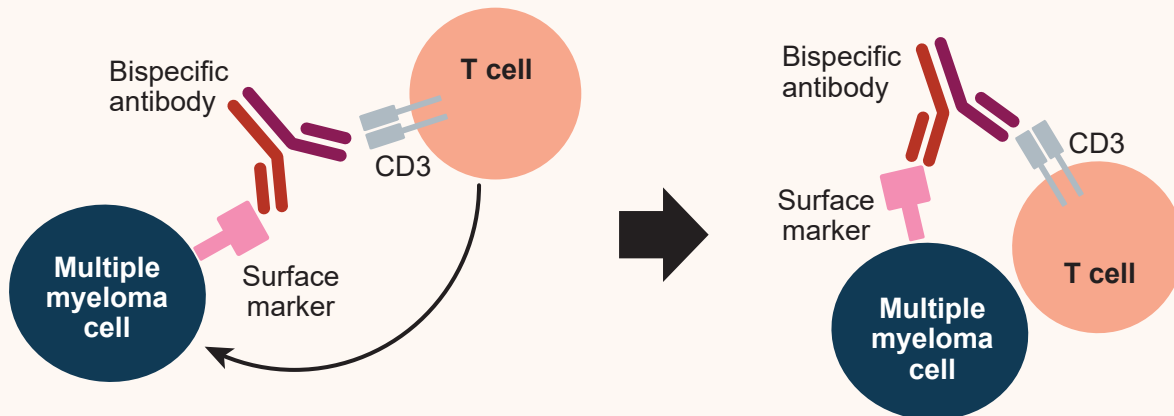
What is a bispecific antibody?



- A bispecific antibody is a monoclonal antibody that can simultaneously bind to two different cell surface markers
- Bispecific antibodies are also called *dual-specific antibodies*, *bifunctional antibodies*, or *T-cell-engaging antibodies*

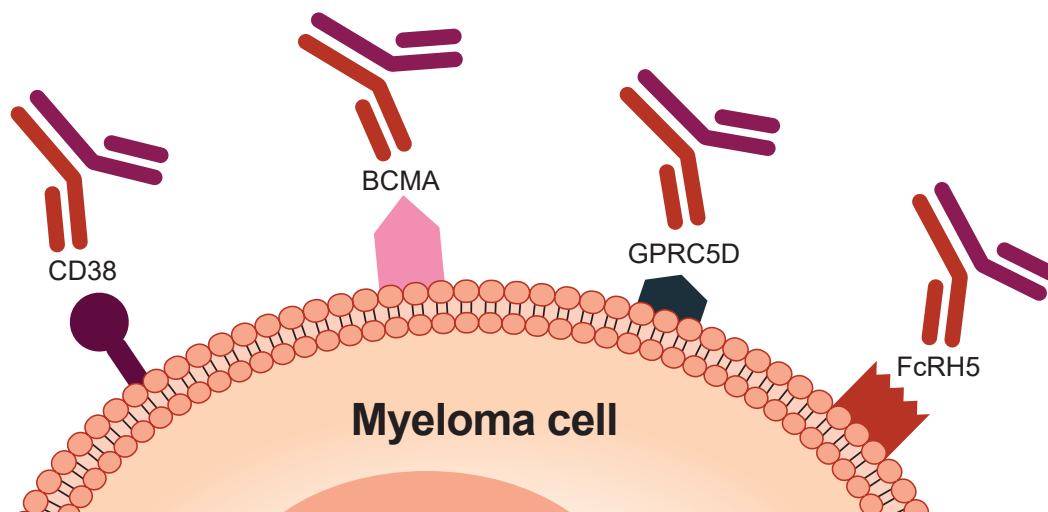
How do bispecific antibodies work?

- One piece of a bispecific antibody seeks out and binds to surface markers on myeloma cells, making them easier for the immune system to find
- The other piece binds to T cells, bringing them directly in contact with myeloma cells so the T cells can recognize and destroy tumor cells
- Bispecific antibodies do not have to be personalized to the patient and can be used “off-the-shelf”

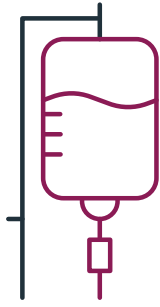


What surface markers do bispecific antibodies target?

- Examples of markers under investigation include:

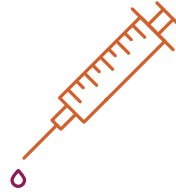


How are bispecific antibodies for multiple myeloma given?



Bispecific antibodies are given through intravenous infusion or injections

OR



- Requires ongoing (for example, weekly) administration

What are common side effects of bispecific antibodies?



Cytokine release syndrome

- Fever
- Flu-like symptoms



Neurotoxicity

- Headache, confusion, cognitive disorder



Anemia (Low number of red blood cells)

- Fatigue, pale/yellowish skin, fast heartbeat, cold hands



Thrombocytopenia (Low number of platelets)

- Easy or excessive bruising, prolonged bleeding from cuts, bleeding from gums or nose



Infection

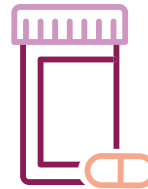


Nausea and diarrhea

What can patients and caregivers do to manage side effects of bispecific antibody treatment?



- ✓ Patients and caregivers should talk with a health care provider about potential side effects before treatment begins



- ✓ If you or your caregiver notices a side effect, contact your health care provider, as he or she can help you find ways to feel better while you stay on your treatment plan



The MMRF Patient Navigation Center

is a space for patients to connect with patient navigators—who are oncology professionals—for guidance, information, and support.

You can reach the MMRF Patient Navigation Center by phone at **1-888-841-6673**, Monday through Friday from 9:00 AM to 7:00 PM Eastern Time, or on the Web at themmrf.org/resources/patient-navigator-center

Support for this resource provided by:



2022 BA

